



COMFORT & CARE  
**TAILORED** *for you.*



# ABOUT US.



Established in 2022, Litewave Healthcare Pvt. Ltd. has driven rapid growth as a leading contributor in the Hygiene & Personal Care Products industry. Our core expertise lies in crafting top-tier baby diaper and adult incontinence products, prioritizing innovation, comfort, and well-being for all.



The Manufacturing unit of Litewave Healthcare is based in Surat, Gujarat (INDIA) With a formidable daily production capacity of 1 Million+ Pcs, we stand poised to consistently meet the demands of our expanding clientele. We further extend our reach and impact through strong partnerships with over several OEM clients, enabling us to serve varied demographics and deliver exceptional value.

# OUR VISION.



Envisioning a world where every individual experiences comfort and care across generations from cradle to golden years, while ensuring to leave a positive impact on the planet."





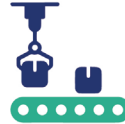
# OPERATIONAL EXCELLENCES.

## Production Facilities



**15,000 Sqm.**

Manufacturing & Operations Unit



**Fully Automated**

High-Speed Production Lines



**1 Million+ Pcs**

Per Day Production Capacity



**Frequently**

Training & Maintenance

## Quality Control & Assurance



Integrated Quality  
**Control System**



Quality Checking by Experts  
**at Every Stage**



All incoming Raw Materials  
**Testing**



Finished Goods Inspection  
**Before Shipment**



Calibrated  
**Instruments**



Well-Equipped  
**Production Unit**

**Global**  
Certifications



# Advanced Soft Baby Pants

Wrap your little one in Dry Comfort for endless smiles and happy moments, because every wiggle deserves the best.



Available  
Sizes

NB

S

M

L

XL

XXL

Available Packs

1 | 2 | 5 | 10 | JUMBO PACK | SUPER JUMBO PACK



# UPTO 12 HOURS PROTECTION



**Gentle & Anti-Rash**  
keeps the baby's delicate skin dry  
while locking the wetness away  
to protect against rashes.



**Criss Cross Sheet**  
which distributes urine quickly  
and evenly to keep your baby  
dry and comfy

**Cotton Like Feel**  
a cotton-like softness  
with its tiny million breathable pores



**Dual Layer Protection**  
Designed with excellent leakage  
guards to prevent leaks  
and keep the baby dry.



**Wetness Indicator**  
gives a signal for the diaper  
change time when the indicator  
turns yellow to blue.



**Elastic Waistband**  
Provides a snug fit and avoids any  
discomfort around the waist area.



**Odour Control System**  
Which helps lock those unpleasant  
smells away



**Long-Lasting Dryness**  
helps babies have uninterrupted  
sleep all day and night



# Premium Soft Baby Pants

Experience the gentle touch of Kiddle Care with Premium Soft, where softness meets your baby's comfort needs.



## Breathable Layers

Incorporates breathable advanced materials to enhance airflow, & reduce the risk of skin irritation



## Ultra-Soft Material

Crafted with a premium soft fabric ensuring maximum comfort for the baby's delicate skin



## Underwear Like Shape

Easy to wear and remove pant-style diapers



## Wetness Indicator

changes colour from yellow to blue that is diaper changing indicator



## Super Absorbent Core

Rapidly lock away moisture and neutralizes unpleasant smells



## Bubble Soft Sheet

Unique bubble soft sheet to wrap your baby in softness



## All Around Fit

Provides a snugly soft fit around the waist area with extra comfort



## 3D Leak Protection

Designed with robust leakage guards to prevent leaks keeping baby utmost dry



## Available Sizes

NB

S

M

L

XL

XXL





# Adult Diaper Pant Style



Premium Soft Adult Pants have been specially designed for Men and Women for maximum comfort and protection. The design looks like brief-style underwear. It's an effective solution to incontinence for your loved ones. Highly absorbent material and odour control technology that rapidly locks away moisture and odour, combined with super absorbent polymer for dual protection enables users to move freely and confidently. The cloth-like outer cover is soft and comfortable.

## New Underwear Like Shape

Advance design & Shapes that makes diaper fit to your body like underwear



## 360 Elastic Waist

Soft and comfortable for all-day outings



## Super Absorbent Core

Rapidly locks away moisture and neutralize unpleasant smell



## Tear Away Sides

More convenient to take off and dispose



## Cottony Soft Material

Cloth like soft material makes the diaper fit perfectly



## Gel Lock Technology

Provide fast absorption and locks in the liquid as a gel



## 3D Leak-Proof

Made of double layer, which shape to user's body for leak proof to give all-round care



## Wetness Indicator

Fades when the diaper needs to be changed



**M** 24"-42"

**L** 20"-52"

**XL** 30"-60"

**XXL** 42"-68"

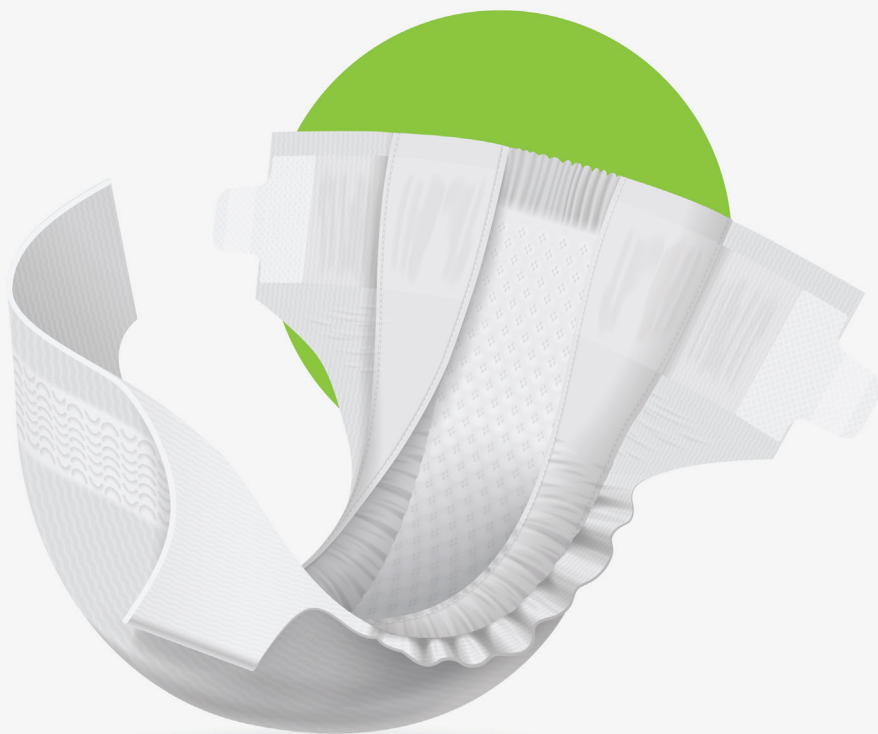


# Adult Diaper Tape Style

Litewave Healthcare Pvt. Ltd. is in the business of manufacturing Premium Adult Incontinence Products, offering both Adult Tape Style Diaper and Adult Pants. Crafted with the best quality materials, maximum absorbency and a soft top layer that shapes to body for all-day comfort. Our Double Core Technology that enables the users to move more freely and confidently.







### Super Absorbent Core

Dual-core padding for superior performance and comfort



### Cloth-Like Back Cover

More soft for the wearer and reduce the risk of skin irritation



### Dry & Soft Topsheet

Non-Woven fabric helps to maintain skin wellness and comfort



### Velcro Tape

Adjustable tabs allow for easy and discreet changing



### Wetness Indicator

Comes with an indicator that lets you know when to change



### Leakage barrier

Leg cuff effectively prevents leakage and makes users more relived and comfortable



### Odour Control

Helps lock those unpleasant smells away



### Fluid Distribution Channel

Keeps you dry by immediately absorbing wetness



# OEM Process

Crafting Your Vision, Delivering Excellence

Elevate Your Brand with Our OEM Process.

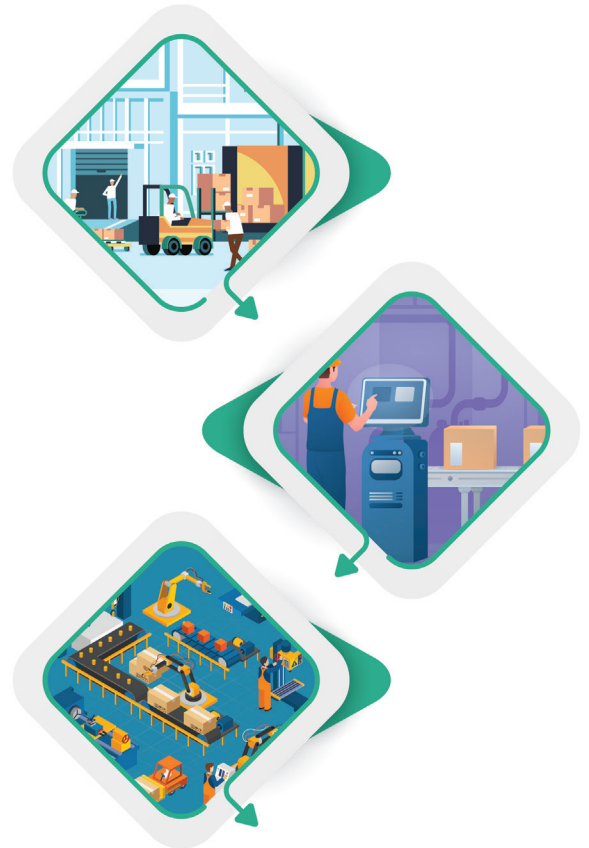




# OEM

## Beneficial facilities

- ✓ Get customised products & specifications according to your suit
- ✓ Value for money products without harmful preservatives.
- ✓ We source raw materials and packaging from world-class suppliers.
- ✓ Best-quality finished goods
- ✓ Quick supply of FG - well connected by Air, Rail, Roads & Ports
- ✓ Hassle free, meet your deadlines.
- ✓ Lab Testing Certificate of Analysis (COA)
- ✓ Quick response & sales service



Daily Production Capacity  
**10 Lac+ Pcs**

No of OEM Clients  
**10+**

No of Staffs  
**100+**



## Our Certifications



**LITEWAVE™**  
Healthcare Private Limited



# CONTACT US

Manufactured & Marketed By:

**LITEWAVE HEALTHCARE PVT. LTD.**

Survey No. 656/1/1, Near Shivalay Industrial Estate,

Behind Shree Khodiyaar Petrol Pump, N.H. 48, Kosamba, Surat - 394 120 / Gujarat, INDIA.

Customer Care : +91 90999 16070 | E-Mail : [inquiry@litewavehealthcare.com](mailto:inquiry@litewavehealthcare.com)

Website : [www.litewavehealthcare.com](http://www.litewavehealthcare.com)

FOLLOW US ON /    



Scan For More Info